

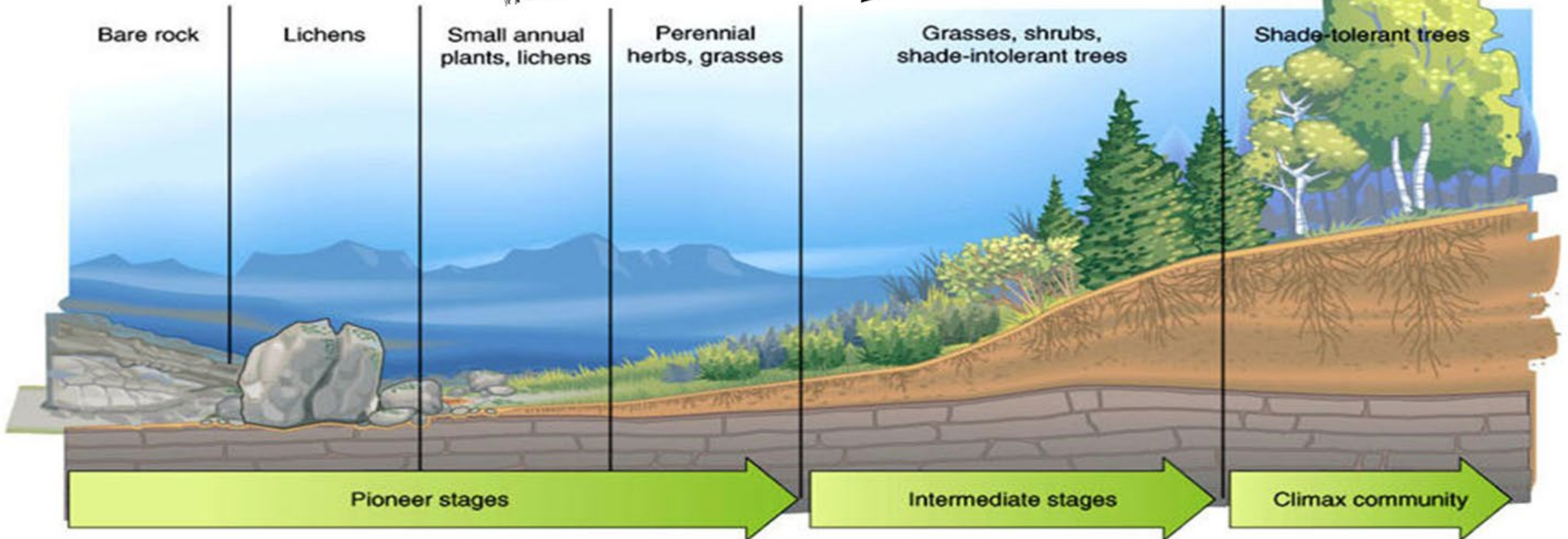
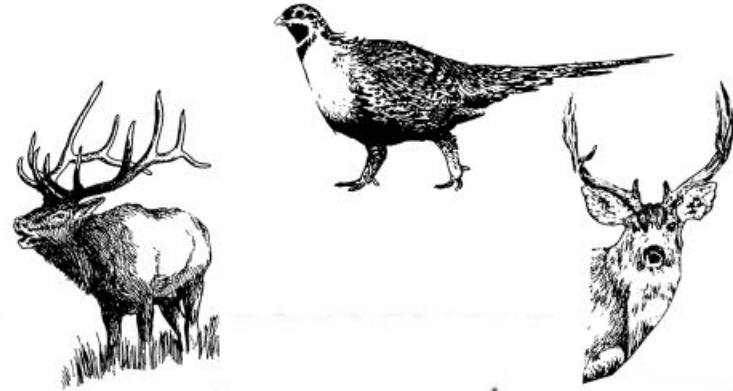
Impacts of Fire on Wildlife



Committee on Federalism

September 25, 2024

Fire Resets the Stage



Bare rock

Lichens

Small annual plants, lichens

Perennial herbs, grasses

Grasses, shrubs, shade-intolerant trees

Shade-tolerant trees

Pioneer stages

Intermediate stages

Climax community

Rehabilitation Can Expedite The Process



photo by Caitlin Bailey



photo by Justin Fritcher, NRCS

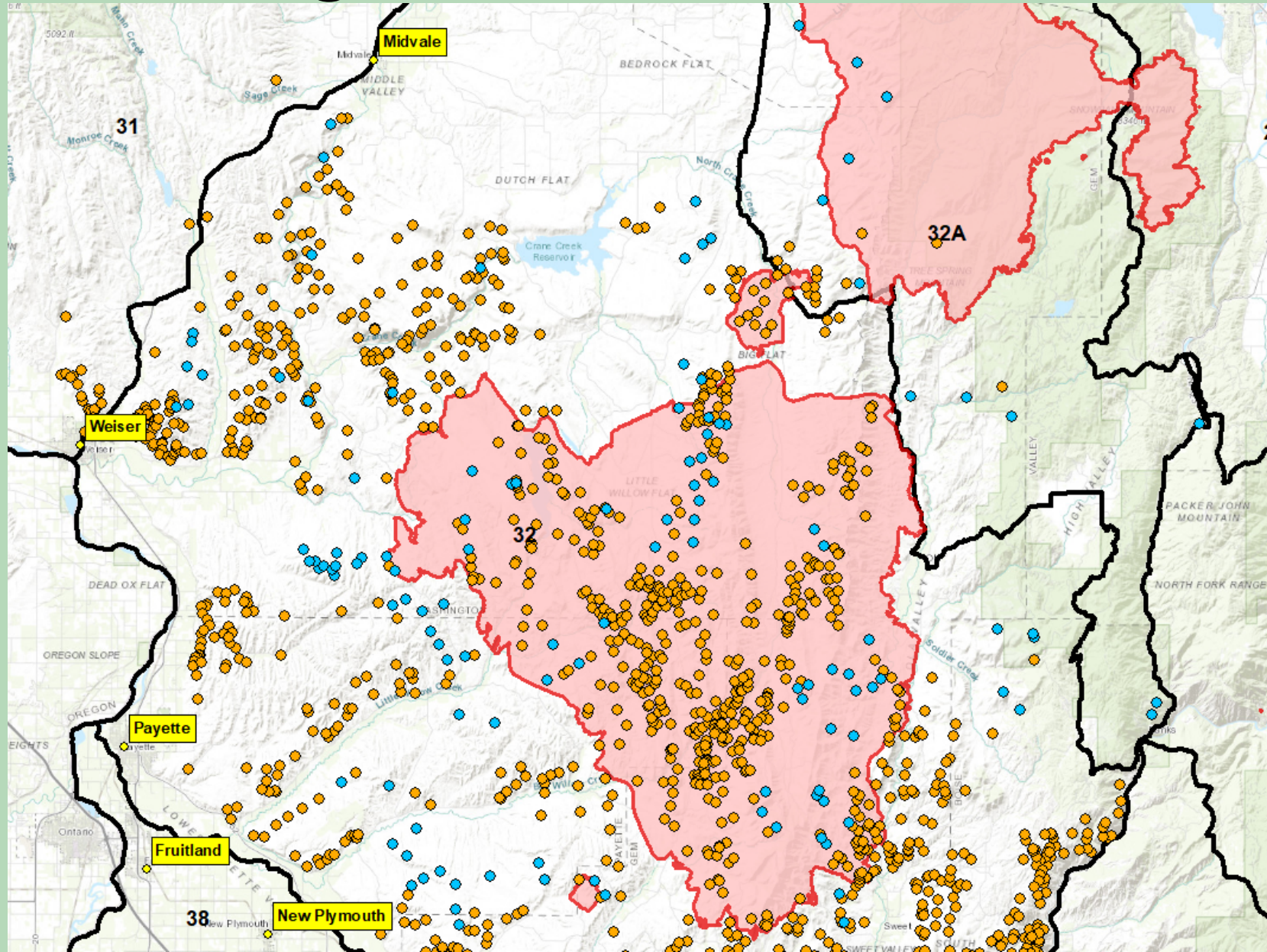


IDFG Response: Habitat Rehabilitation

- IDFG provides technical assistance, labor, and funding
- Bridge gap between efforts on federal, state, and private lands



Seasonal Ranges



Direct Mortality

Most Fires: progression is slow enough for large wildlife to move out of the way.

Occasionally fires move so quickly that wildlife are overcome.

Photos are from Lava Fire, which grew from approximately 2,500 acres to over 40,000 acres in one day.



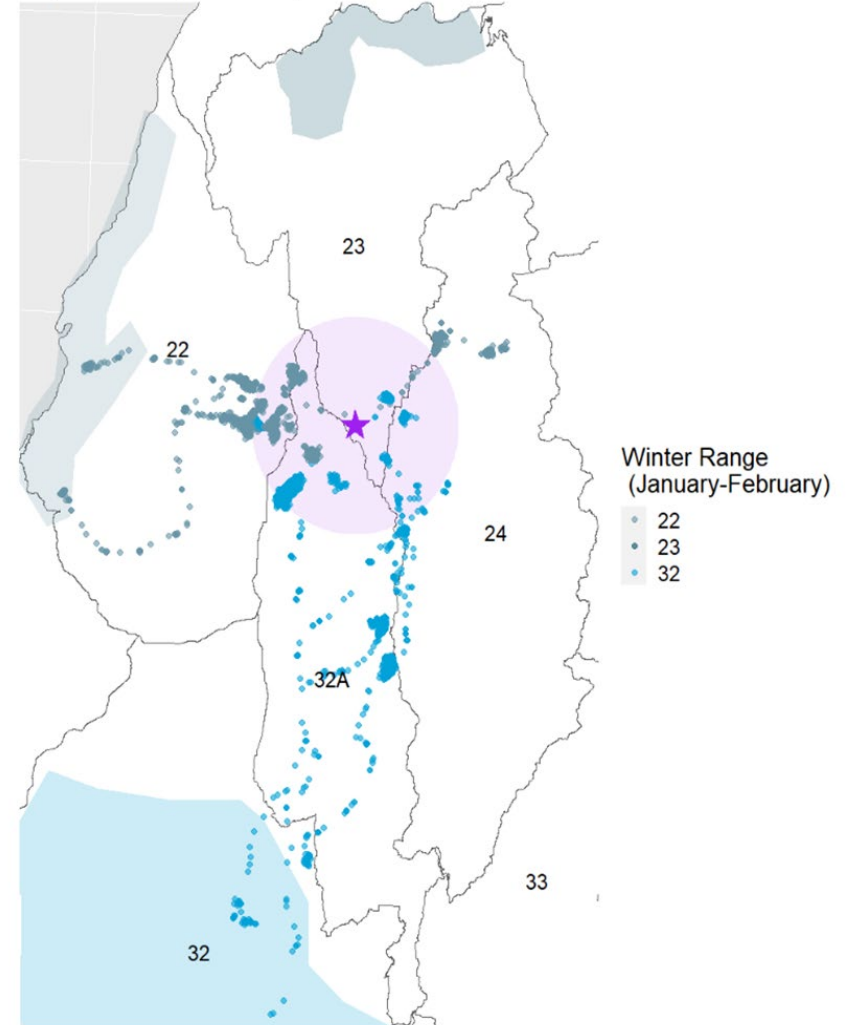
Photo credit
Trinity Hess

IDFG Response: Herd Management

- Supplemental feeding
- CWD
- Emergency hunts



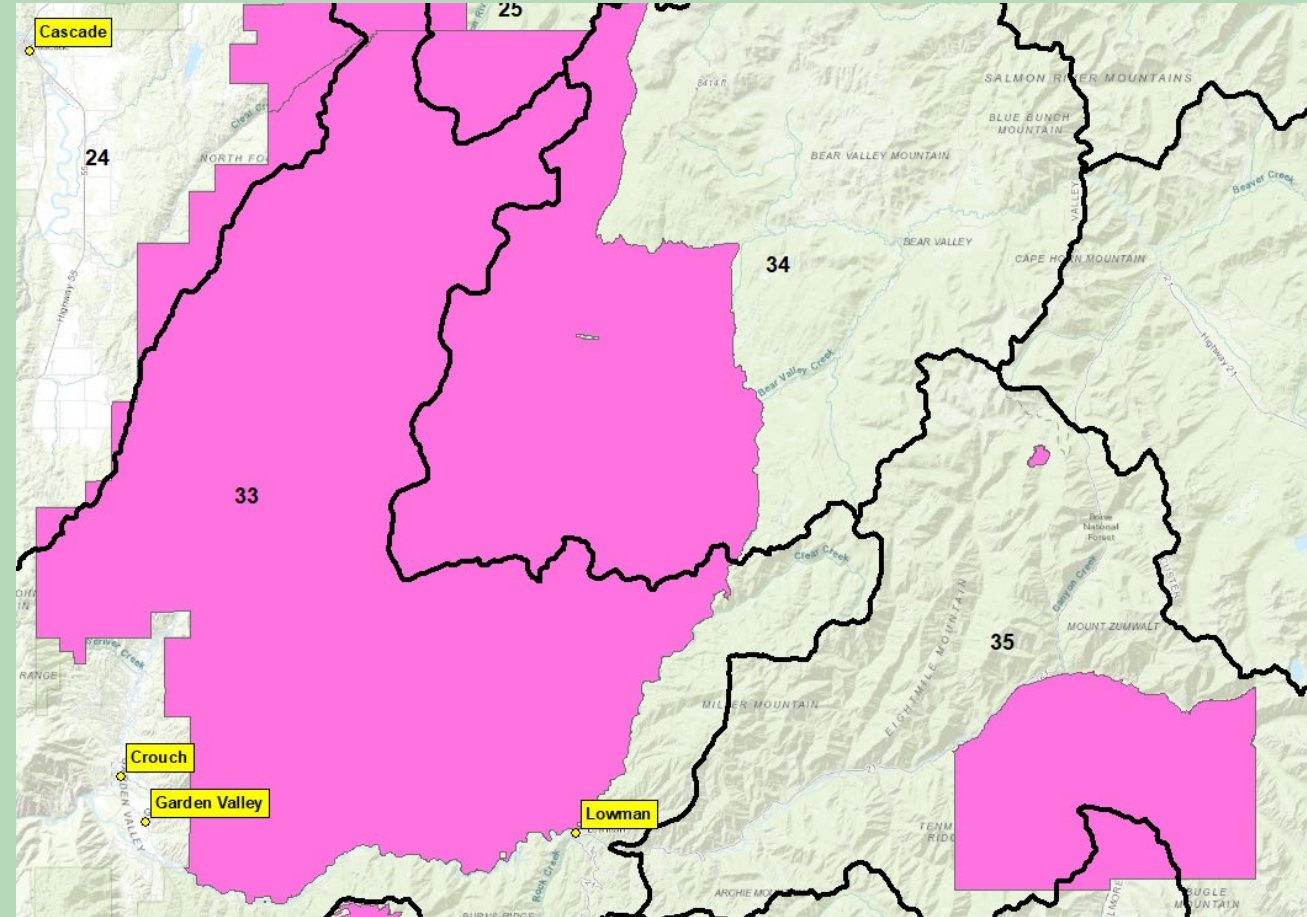
Mule Deer (n=22) within 10 mile radius of Blue Bunch Sample
July - October (2019-2023)



The purple star represents the positive CWD sample with 10 mile radius circle (shaded purple).

Impacts on Hunters

- In some cases, significant portions of units or hunt areas are closed due to fire
- IDFG response can include communication with hunters, refunds in limited instances, advice on accessible areas.



Questions?

